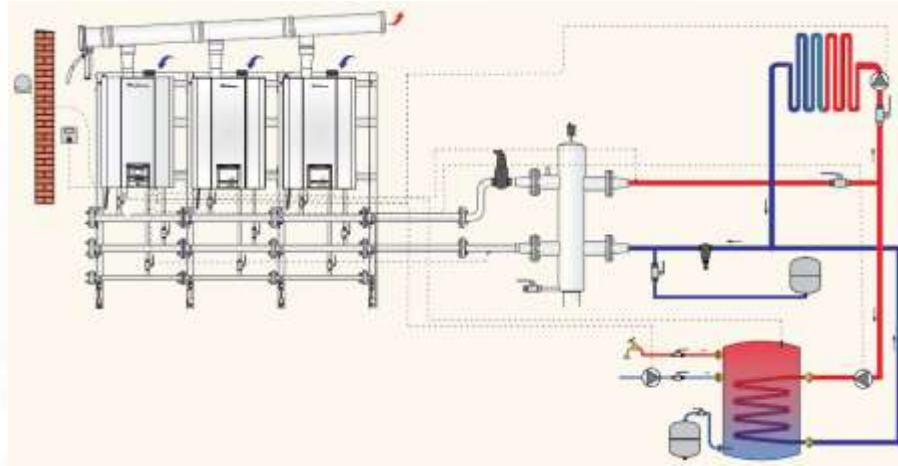
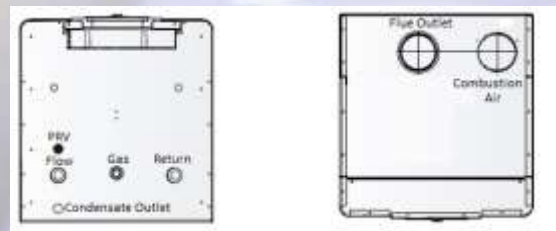
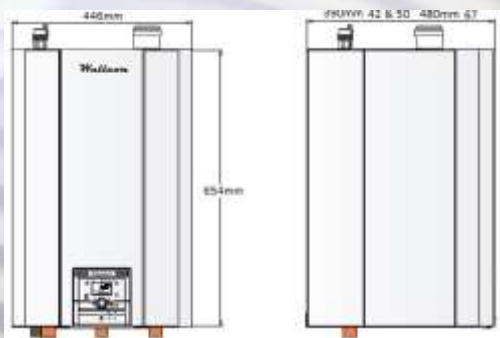


Wallcon 42, 50 & 67kW Wall Hung Condensing Boilers



- Stainless Steel Heat Exchangers.
- Class 5 NOx.
- Fully Modulating Premix Burner.
- Turndown 5.5:1 for the 42, 6.7:1 for the 50 and , 4.6:1 for the 67.
- Direct BMS Connectivity.
- Remote Monitoring Options. GSM / Web Connectivity.
- Full Range of Concentric and Single Walled Flue Components Including Cascade.
- Integral Cascade Functionality up to 16 boilers. (7.6kW – 2560kW)
- Matched Mounting Frames and Cascade Hydraulics including Low Loss Headers or Matched System Separation Plate Heat Exchangers.
- Integral Pump with Anti-Seize Program.
- Frost Protection Program.
- Integral Safety Controls Fully Compliant with British Standards.
- Natural Gas / LPG Compatible.
- Remote Monitoring Options. GSM / Web Connectivity.



MHG Heating Ltd Unit 4 Epsom Downs Metro Centre, Waterfield, Tadworth, Surrey. KT20 5LR
Phone 08456 448802 Fax 08456 448803 Email info@mhgheating.co.uk web www.mhgheating.co.uk

Wallcon 42, 50 & 67kW Wall Hung Condensing Boilers

Model	Wallcon	42		50		67	
		min.	max.	min.	max.	min.	max.
Installation types		B23, C13, C33, C43, C53, C63, C83					
Gas categories		2H, 2E, 2LL, 3+ and 3B/P					
Fuel type		Natural Gas / LPG					
Nominal heat input Q _n	kW	8	39,4	8	48	15	63
Nominal heat output P _n at (80 - 60 °C)	kW	7,6	38,3	7,6	46,3	14,4	61
Nominal heat output P _n at (50 - 30 °C)	kW	8,5	42	8,5	51	16	67,1
Working pressure	bar	0,8	3	0,8	3	0,8	4
Max. working temperature	°C			85			
Water content	l	2,5		2,5		3,5	
Condensate discharge rate	kg/h	7,5		10		14	
Efficiency&Combustion							
Efficiency at Q _{min} (80 - 60 °C)	%	94,9		94,9		96,0	
Efficiency at Q _{max} (80 - 60 °C)	%	97,1		96,4		96,9	
Efficiency at Q _{min} (50 - 30 °C)	%	106,0		106,0		107,2	
Efficiency at Q _{max} (50 - 30 °C)	%	106,8		106,3		106,5	
Partial load return 30 °C	%	106,7		106,9		107,9	
Efficiency level		★★★★					
Flue gas temperature (50 - 30 °C)	°C	42	52	43	64	39,8	62,7
Flue gas temperature (80 - 60 °C)	°C	63	75	63	82	62,9	82
Gas nozzle (G20)	mm	7,7					
Gas nozzle (G25)	mm	9,5					
Gas nozzle (G31)	mm	5,5					
CO ₂ emissions (G20)	%	8,9	9,2	8,9	9,2	8,9	9,2
CO ₂ emissions (G25)	%	8,9	9,4	8,9	9,4	8,9	9,2
CO ₂ emissions (G30)	%	10,6	11,1	10,6	11,1	10,7	11,1
NO _x emissions (G20)	mg/kWh	35,68		42,99		34,1	
NO _x emissions (G25)	mg/kWh	39,77		38,38		37,89	
NO _x emissions (G30)	mg/kWh	42,65		72,81		73,53	
NO _x class		5					
Combustion products output mass (G20)	g/sec	3,7	17,7	3,7	21,6	6,90	28,40
Combustion products output mass (G25)	g/sec	3,7	17,4	3,7	21,3	7,00	28,40
Combustion products output mass (G30)	g/sec	3,5	16,6	3,5	20,2	6,50	26,50
Gas flow rate (G20)	m ³ /h	0,9	4,2	0,9	5,1	1,57	6,7
Gas flow rate (G25)	m ³ /h	1,0	4,8	1,0	5,9	1,82	7,8
Gas flow rate (G30)	m ³ /h	0,3	1,2	0,3	1,5	0,47	2,0
Fan speed (G20)	rpm	1250	5100	1250	6000	1700	6500
Fan speed (G25)	rpm	1300	5100	1300	6250	1700	6500
Fan speed (G30)	rpm	1200	4750	1200	5750	1350	5900
Connections							
System flow	"	1		1		1	
System return	"	1		1		1	
Gas inlet	"	3/4		3/4		3/4	
Safety drain	"	1/2		1/2		1/2	
Condensate discharge	mm	25		25		25	
Flue outlet	mm	80		80		80	
Air intake	mm	80		80		80	
Electrical							
Power supply	V/Hz	230 - 50		230 - 50		230 - 50	
Power consumption	W	220		250		280	
Electric insulation class	IP	X4D		X4D		X4D	
Dimensions & Weight							
Dimensions	mm	446x390x654		446x390x654		446x480x654	
Weight	kg	33		33		44	

MHG Heating Ltd Unit 4 Epsom Downs Metro Centre, Waterfield, Tadworth, Surrey. KT20 5LR
 Phone 08456 448802 Fax 08456 448803 Email info@mhgheating.co.uk web www.mhgheating.co.uk